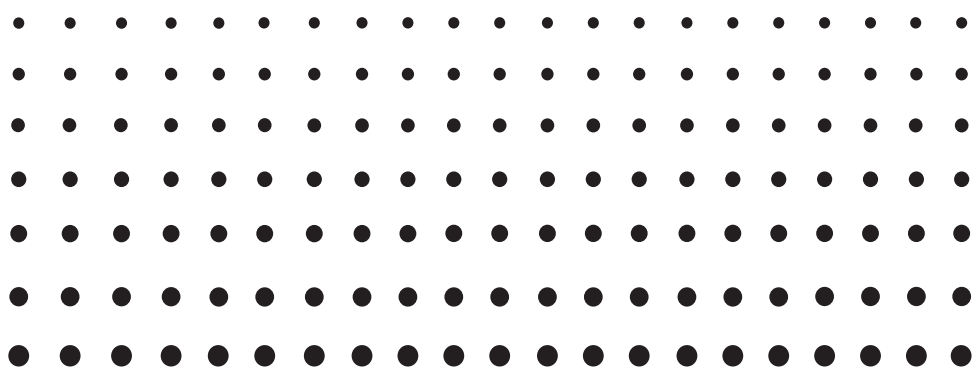
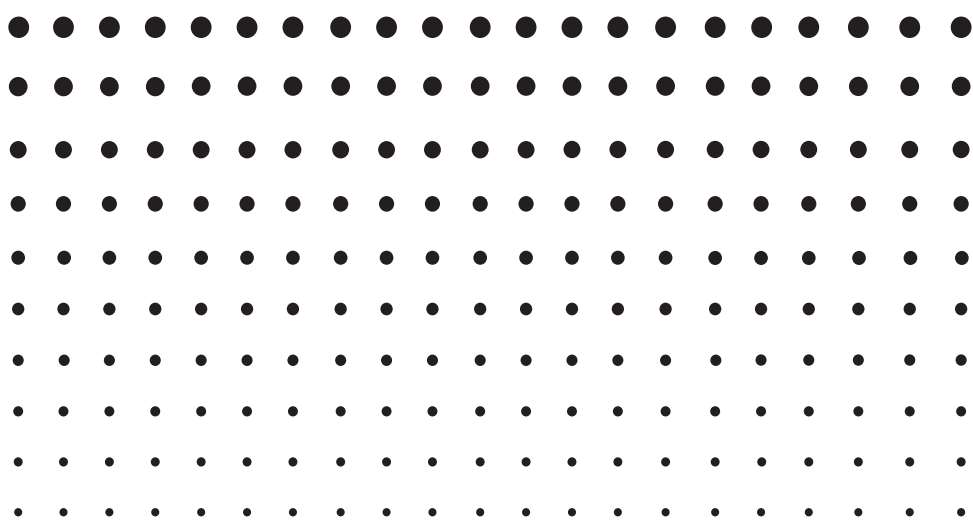


**For fx-CG Series**

EN



# ***OS Update Application User's Guide***



CASIO Worldwide Education Website

<http://edu.casio.com>

**CASIO®**

# Introduction

- This OS Update Application updates the operating system of fx-CG Series CASIO Graphic Scientific Calculator.
- To check the operating system version of your calculator, enter the System mode and press **[F4]** (VERSION).

## ***Important!***

- Updating deletes all data in the calculator's Main Memory. If you need the data, make sure you back it up before updating. Use the Memory mode backup function to backup data.
- Exit all other applications before starting up this application.
- If you have multiple calculators to update, do so one at a time. Be sure to connect only one calculator to the computer at a time. Connecting multiple calculators to your computer and executing the OS update operation creates the risk of data being deleted and damage to the calculators.
- Make sure there is no other CASIO device besides the calculator whose OS you are about to update connected to the computer. If there is, disconnect the other device.
- Do not perform any of the following operations while OS Update is running.
  - Connecting to a USB device
  - Turning a connected USB device on or off
  - Starting up another application
  - Inserting or removing a memory card

## ***Note***

- The screen shots shown in this manual are for explanatory purposes only. The actual calculator display may appear different from what is shown here.

## System Requirements

Operating Systems:	Windows® XP Home Edition, Windows XP Professional (32-bit), Windows Vista® (32-bit), Windows 7 (32-bit/64-bit), Windows 8 (32-bit/64-bit) (Desktop UI) Your hardware configuration needs higher than functionalities that operating system recommends.
Computer:	Computer with one of the Windows operating systems pre-installed (Excluding computers with an upgraded operating system and self-built computers.)
Account Type:	Administrator
Disk Space:	100 MB for installation and uninstall
Note:	Actual requirements and product functionality may vary based on your system configuration and operating system.
Other:	USB port for direct connection. Do not connect via a USB hub. Video adapter and display must support resolution of XGA (1024×768) or higher, 16-bit or higher system color. Adobe® Reader® 8.0 or later.

### **Note**

- Windows and Windows Vista are registered trademarks or trademarks of Microsoft Corporation in the United States and/or other countries.
- Adobe and Reader are either registered trademarks or trademarks of Adobe Systems Incorporated in the United States and/or other countries.
- Company and product names used herein are trademarks of their respective owners.
- Note that trademark <sup>™</sup> and registered trademark <sup>®</sup> are not used within the text of this user's guide.

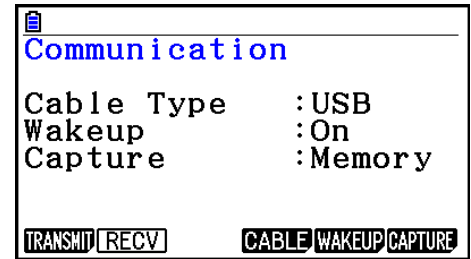
# To update the calculator operating system

1. On the calculator, enter the **Link** mode and then configure the following settings.  
After configuring the settings, turn off the calculator.

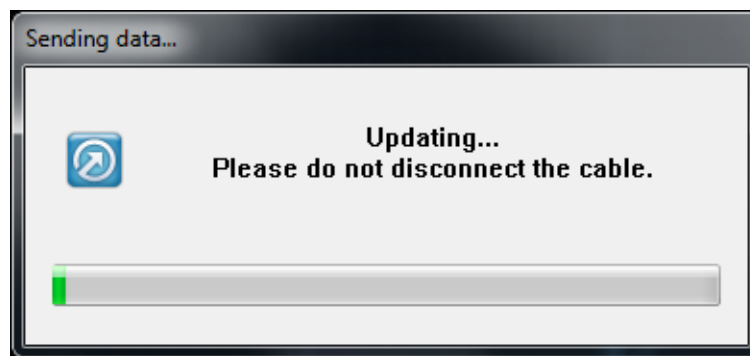
Cable Type : USB

Wakeup : On

Capture : Memory



2. On your computer, double-click the OS Update application EXE file.
3. Perform operations as instructed by the text that appears on the screen.
  - A progress bar will show the progress of the update.

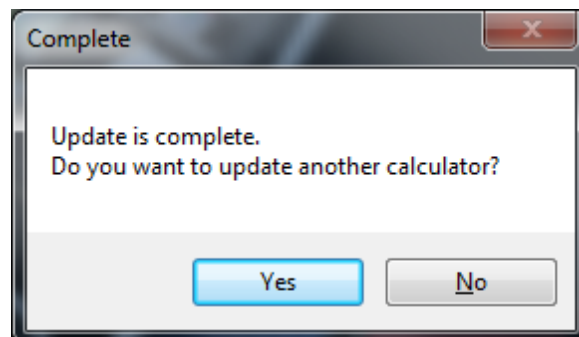


## CAUTION

Do not unplug the cable while updating is in progress.

If the cable becomes unplugged during updating, see “What to do if the cable becomes unplugged during updating” (page EN-5) for information about what you need to do.

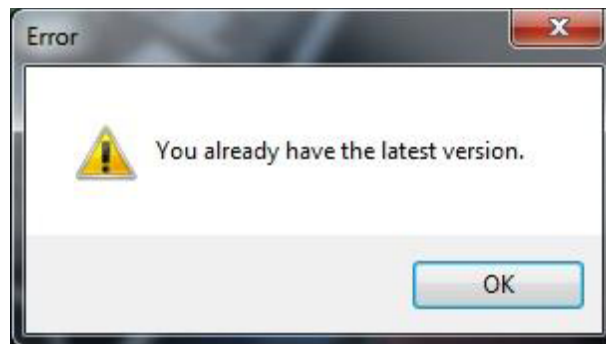
4. The dialog box shown below will appear when the update is complete.



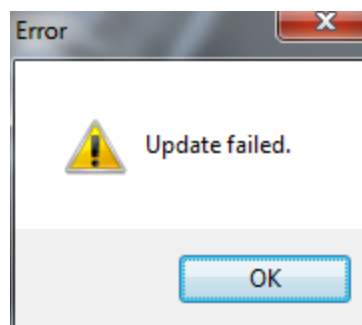
5. Disconnect the USB cable from the calculator.
6. If you plan to update another calculator, click [Yes].
  - Perform operations as instructed by the text that appears on the screen.
7. To exit the OS update operation, click [No].
8. Click [Finish].

**Note**

- The message below will appear if you try to update a calculator that is already updated.



- The following message will appear if an error occurs during updating.



If the update fails and the calculator freezes with "Receiving..." on the display, press the RESTART button. This should cause the following message to appear on the calculator display, "OS ERROR Please update OS." Perform the update again.

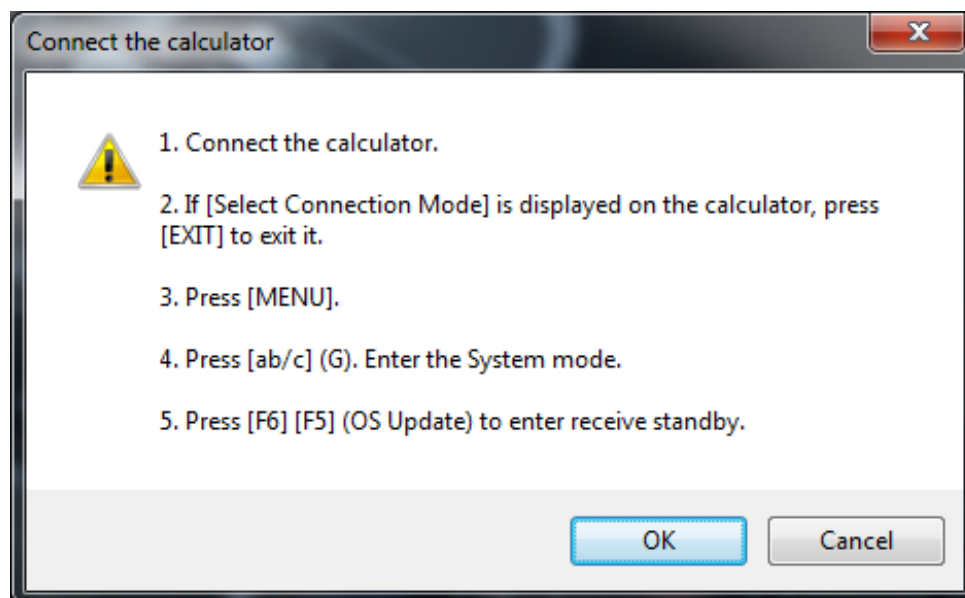
# What to do if the cable becomes unplugged during updating

The message below will appear if the calculator's system memory becomes corrupted.

```
*****
*                                     *
*           OS ERROR                 *
*                                     *
* Please update OS.                 *
*                                     *
*                                     *
*****
```

Leave the message on the display and perform the procedure below.

1. Perform the procedure under "To update the calculator operating system". (Calculator operation is not required.)



2. Click [OK].
3. Perform operations as instructed by the text that appears on the screen.

**CASIO®**

**CASIO COMPUTER CO., LTD.**

6-2, Hon-machi 1-chome  
Shibuya-ku, Tokyo 151-8543, Japan

SA1310-D

© 2013 CASIO COMPUTER CO., LTD.