



OS Update Application

for fx-9860GII SD

fx-9860GII

fx-9860GII s

fx-9860G AU PLUS

GRAPH95

GRAPH75+

GRAPH75

GRAPH75+ E

User's Guide



CASIO Worldwide Education Website

<http://edu.casio.com>

Manuals are available in multi languages at

<http://world.casio.com/manual/calc>

CASIO®

Introduction

- This OS Update Application updates the operating system of fx-9860GII Series and GRAPH 95/75 Series CASIO Graphic Scientific Calculator.
- To check the operating system version of your calculator, enter the SYSTEM mode and press **[F4]**(VER).

Important!

- A special USB driver must be installed on your computer in order to connect to the calculator. When performing the procedure below, do not connect the calculator to your computer until specifically instructed on screen to do so.
- **Updating deletes all data in the calculator's Main Memory. If you need the data, make sure you back it up before updating. Use the MEMORY mode backup function to backup data.**
- Exit all other applications before starting up this application.
- If you have multiple calculators to update, do so one at a time. Be sure to connect only one calculator to the computer at a time. Connecting multiple calculators to your computer and executing the OS update operation creates the risk of data being deleted and damage to the calculators.
- Make sure there is no other CASIO device besides the calculator whose OS you are about to update connected to the computer. If there is, disconnect the other device.
- Do not perform any of the following operations while OS Update is running.
 - Connecting to a USB device
 - Turning a connected USB device on or off
 - Starting up another application
 - Inserting or removing a memory card

Note

- The screen shots shown in this manual are for explanatory purposes only. The actual calculator display may appear different from what is shown here.

System Requirements

Operating Systems:	Windows Vista® (32-bit), Windows® 7 (32-bit/64-bit), Windows 8.1 (32-bit/64-bit), Windows 10 (32-bit/64-bit) Your hardware configuration needs higher than functionalities that operating system recommends.
Computer:	Computer with one of the Windows operating systems pre-installed (Excluding computers with an upgraded operating system and self-built computers.)
Account Type:	Administrator
Disk Space:	100 MB for installation and uninstall
Note:	Actual requirements and product functionality may vary based on your system configuration and operating system.
Other:	USB port for direct connection. Do not connect via a USB hub. Video adapter and display must support resolution of XGA (1024×768) or higher, 16-bit or higher system color. Adobe® Reader® 8.0 or later.

Note

- For the latest information about system requirements, visit the website at the URL below:
http://world.casio.com/support/os_support/
- Windows and Windows Vista are registered trademarks or trademarks of Microsoft Corporation in the United States and/or other countries.
- Adobe and Reader are either registered trademarks or trademarks of Adobe Systems Incorporated in the United States and/or other countries.
- Company and product names used herein are trademarks of their respective owners.
- Note that trademark [™] and registered trademark [®] are not used within the text of this user's guide.

To update the calculator operating system

Warning!

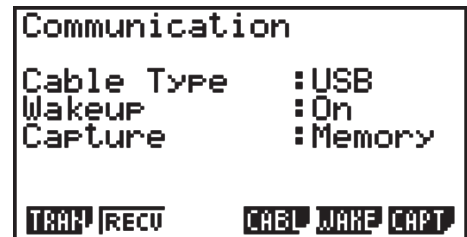
- PLEASE DO NOT CONNECT THE CALCULATOR TO YOUR PC
Until specifically instructed on screen to do so
– see below step 3 –
- Updating deletes all data in the calculator's Main Memory. If you need the data, make sure you back it up before updating. Use the MEMORY mode backup function to backup data.

1. On the calculator, enter the LINK mode and then configure the following settings.

Cable Type : USB

Wakeup : On

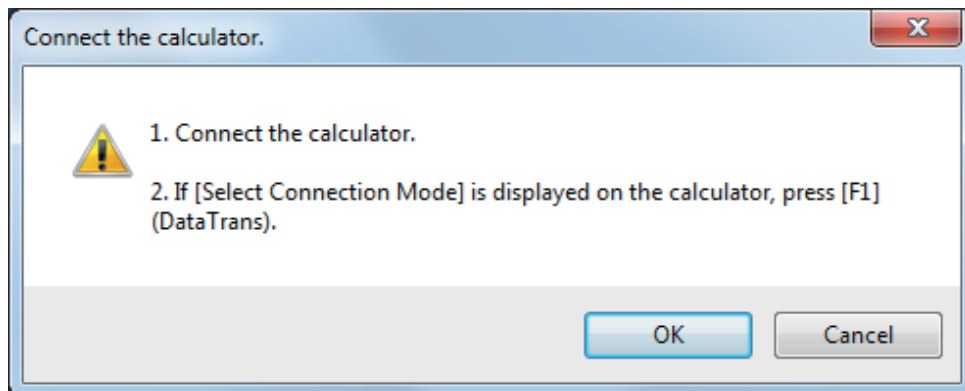
Capture : Memory



2. On your computer, double-click the OS Update application EXE file.

3. Perform operations as instructed by the text that appears on the screen.

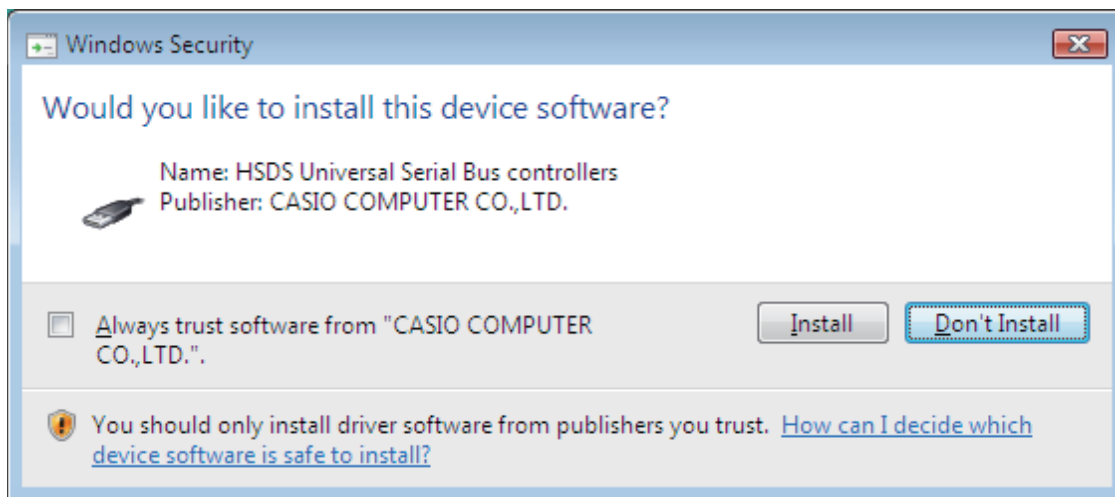
- If the message shown below appears, use the USB cable to connect the calculator to your computer.



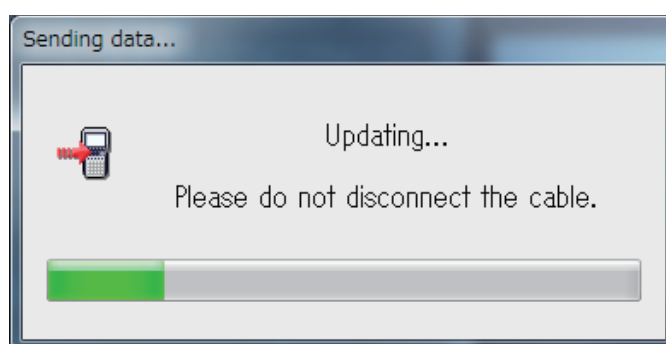
- If this is the first time you are connecting the calculator to your computer, you will need to install a USB driver. If the message shown below appears, click [Install].
- After installing the USB driver, follow the instructions that appear on your computer screen.

Note

- If your computer already has the USB driver installed, you do not need to install it again.



- A progress bar will show the progress of the update.

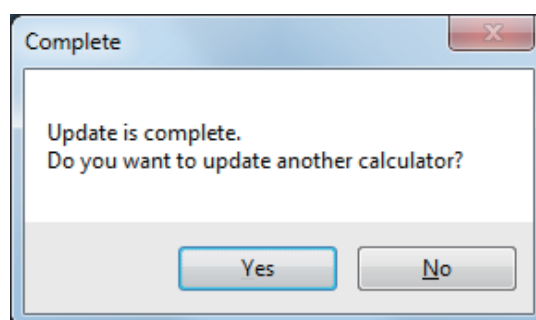


CAUTION

Do not unplug the cable while updating is in progress.

If the cable becomes unplugged during updating, see “What to do if the cable becomes unplugged during updating” (page EN-6) for information about what you need to do.

4. The dialog box shown below will appear when the update is complete.



5. Disconnect the USB cable from the calculator.

6. If you plan to update another calculator, click [Yes].

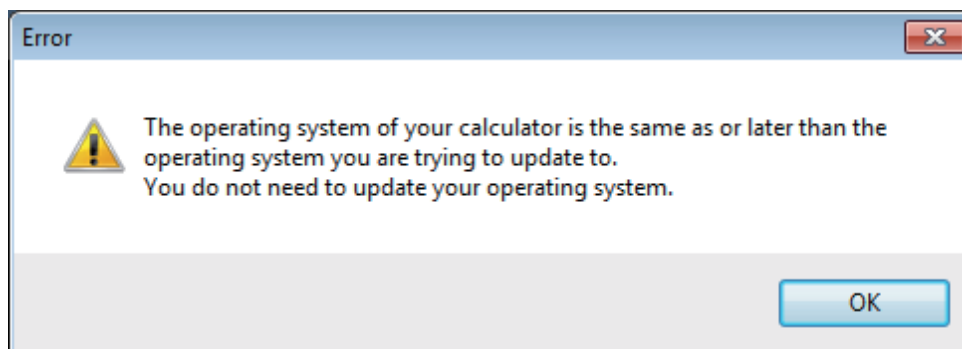
- Perform operations as instructed by the text that appears on the screen.

7. To exit the OS update operation, click [No].

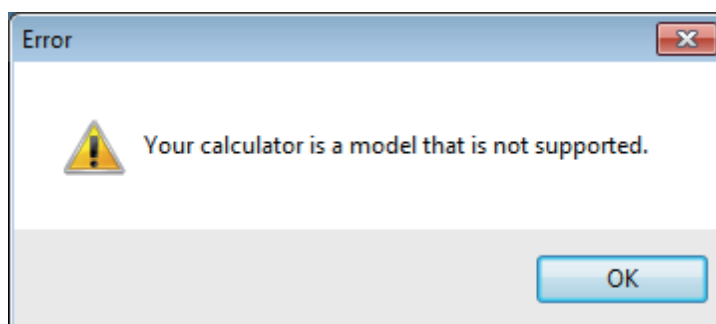
8. Click [Finish].

Note

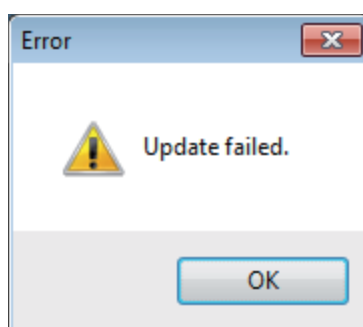
- The message below will appear if you try to update a calculator that is already updated.



- The following message will appear if you try to update a calculator using an exe file for a different calculator model.



- The following message will appear if an error occurs during updating.



If the update fails and the calculator freezes with "Receiving..." on the display, press the RESTART button. This should cause the following message to appear on the calculator display, "OS ERROR Please update OS." Perform the update again.

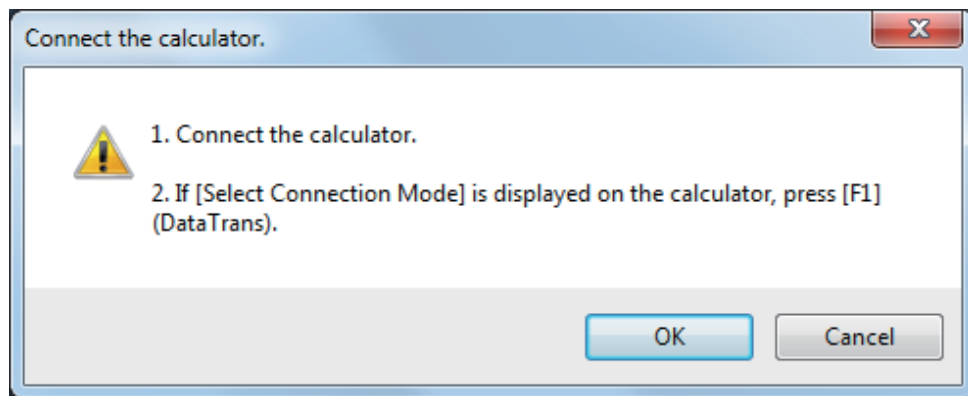
What to do if the cable becomes unplugged during updating

The message below will appear if the calculator's system memory becomes corrupted.

```
*****  
*          OS ERROR          *  
* Please update OS.         *  
*                           *  
*****
```

Leave the message on the display and perform the procedure below.

1. Perform the procedure under "To update the calculator operating system". (Calculator operation is not required.)



2. Click [OK].
3. Perform operations as instructed by the text that appears on the screen.

CASIO®

CASIO COMPUTER CO., LTD.

6-2, Hon-machi 1-chome
Shibuya-ku, Tokyo 151-8543, Japan

SA1603-E

© 2014 CASIO COMPUTER CO., LTD.